



LUTHERAN CHURCH

NEW SALEM LUTHERAN CHURCH

7491 Island View Dr. NE Turtle River, MN 56601

Pastor Terry Hagensen

E-Mail Address: newsalem@paulbunyan.net

Web Site: newsalemlutheran.org

Church Phone: 218-586-2262

APRIL 2026

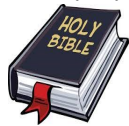
Monthly Events

April

2, 9, 16, 23, 30

9:30 AM

Bible Study



April 2
6:30 PM
Service



April 3
6:30 PM
Service



April 5

Easter

He IS Risen!

April 10 & 13

Food Shelf

9:00am—

12:15pm

12:00pm—

3:15pm



April 21

7:00 pm Council

6:00 pm Teams

April 18

8 AM—1 PM

**RUMMAGE
& BAKE
SALE**

Sisters and Brothers in Christ,

Christ is risen! He is risen indeed! Alleluia!

This is the greeting of Christians across the world on Easter morning—declaring and announcing our faith to one another and to the world. We celebrate and remember the victory Christ won over death and the devil, when we were given the gift of eternal life—by grace, through faith.

Easter has always been my favorite season of the church year. There is something powerful in the sound of victory as we raise our voices in hymns of praise and adoration. Easter brings some of the most incredible music of the year, and when those voices fill the sanctuary, it is as if light and love themselves are surrounding us. It is a moment I never want to end.

And yet, life is not lived only in those moments.

Life also holds seasons of sadness—feelings of despair, hopelessness, and fear. These emotions are real, and they settle deep within our hearts and souls, longing to be healed and carried away. We search for peace and freedom in many places—people, possessions, distractions—only to find that they often leave us wanting more.

It may sound simple, even familiar—but it is also the deepest truth we know **Jesus has won the victory.**

Easter is not just a single Sunday on the calendar. It is the beginning of a new reality—the first day of all eternity. Because Christ is risen, death no longer has the final word. Because Christ is risen, fear does not define us. Because Christ is risen, hope is not lost.

The words of the prophet speak into our lives still today:

“Fear not, for I have redeemed you; I have called you by name; you are mine.” (Isaiah 43:1)

In Christ’s victory, these words become personal. We are redeemed. We are claimed. We are held as God’s own. Through the gift of the Holy Spirit, we are joined to the death and resurrection of Jesus—and that changes everything.

So, we are invited—not just once, but every day—to live into that freedom. To trust it. To receive it. To let it take root in our hearts and shape the way we live.

Christ is risen! He is risen indeed! Alleluia!

Peace,
Pastor Terry

*New Salem Lutheran Church is a Community of Christians having a mission to serve others through **Hospitality** and **Caregiving** and inviting all people into a life-giving relationship with Jesus through worship and discipleship.*

Meet your 2026 New Salem Council
 President: Nora Illes
 Vice Pres: Fred Sanford
 Secretary: Calli Ferdig
 Treasurer: Jerry Illes
 Graig Gilbertson Sonya Kraft
 Shannon Pitt Bob Wagner
 Council meets at 7:00 on the 3rd Tuesday
 of each month.
 Join our Ministry Teams
 Worship & Music Youth & Education
 Building & Grounds Stewardship & Outreach
 Teams meet at 6:00 on the same evening.



Join Us for
 Worship
 9:30 AM
 You are Welcome



Saturday, April 18th
 Spring Rummage Sale
 and Bake Sale
 8 AM—1 PM
 Bargain Sale at noon
 Start collecting your items.



This is a congregational event. Watch for
 sign-up sheets for helping.
 Profits are given to help non-profits
 in our community.

We are collecting items for our next round of
Birthday Bags for our Food Shelf.
 We need **cake mixes** (white, yellow,
 chocolate), full-sized containers of **frosting**
 (chocolate, vanilla, Funfetti), and luncheon
 size birthday **napkins**.
 We have enough candles.
 Our goal is 150 bags.
 Assembling bags on Sunday, April 12th.

Council did NOT meet in
 March
 so there
 are no
 minutes.



Happy Easter!



Readings for April
 APRIL 2: **Maundy Thursday** Exodus 12:1-14; Psalm 116:1-2, 12-19; 1 Corinthians 11:23-26 J
 John 13:1-17, 31b-35
 APRIL 3: **Good Friday** Isaiah 52:13—53; 12 Psalm 22; Hebrews 10:16-25; John 18:1—19:42
 APRIL 5: **EASTER** Acts 10:34-43; Psalm 118:1-2, 14-24; Colossians 3:1-4; Matthew 28:1-10
 APRIL 12: Acts 2:14a, 22-32' Psalm 16; 1 Peter 1:3-9; John 20:19-31
 APRIL 19: Acts 2:14a, 36-41; Psalm 116:1-4, 12-19; 1 Peter 1:17-23; Luke 24:13-35
 APRIL 26: Acts 2:42-47; Psalm 23; 1 Peter 2:19-25; John 10:1-10





Updates from the Synod

April 2026

This monthly insert is just one way to stay connected with what's going on in the Northwestern Minnesota Synod. You'll find highlights of recent news, upcoming events, and ways our synod is walking together in ministry. We hope it helps you see the bigger picture of how God is at work through the Northwestern Minnesota Synod.

Upcoming Events



April 11

Conference 2 Summit

April 16

Joint Theological Day

April 24

In-Person Boundaries & Anti-Racism Training

April 25

Synod Council | SAM Retreat

April 26-28

First Call Retreat | Ready to Retire Event



May 1-2

Behold The New Has Come! Summit

May 7

Stewardship Day

May 17 & 18

Synod Assembly Pre-Event

Zoom Sessions

May 30

Synod Assembly



Prayer Corner

God of new life,
when things feel heavy or uncertain,
lift what weighs on us.

Where there is fear, bring peace.
Where there is guilt, bring grace.
Where something feels stuck or finished,
make a way forward.

Like light breaking across the sky,
remind us that hope is still rising,
even now.

Amen.



Synod Spotlight

ELCA World Hunger Grants

We're excited to celebrate that 17 congregations in our synod received ELCA World Hunger grants!

These grants support ministries that are addressing hunger, caring for neighbors, and building stronger communities.

This is a powerful reminder that your generosity is making a real difference—right here and beyond.

NW MN Hunger Grant Recipients

First Lutheran Church, Battle Lake
Grace Lutheran Parish, Hallock
Bethlehem Church, Newfolden
First Lutheran Church, Detroit Lakes
Bethany Lutheran Church, Red Lake Falls
Our Savior's Lutheran Church, Barnesville
Grove Lake Lutheran Church, Pelican Rapids
Sion Lutheran Church, Lancaster
Peoples Church, Bemidji
Faith Lutheran Church, Milton
Faith Lutheran Church, Wolverton
Bethany Lutheran Church, Williams
Zion Lutheran Church, Fergus Falls
Dilworth Lutheran Church, Dilworth
Glyndon Lutheran Church, Glyndon
Eksjo Lutheran Church, Lake Park
Our Savior's Lutheran Church, Warren

Stay Connected with
NW MN Synod
e-news | updates

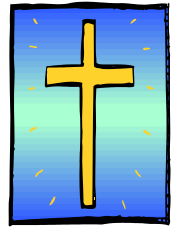


Partners in Ministry:

Lutheran Campus Ministry-Bemidji



*New Salem's
Highlighted Mission Partner
April 2026
Lutheran Campus Ministry
Bemidji*



Mission: Lutheran Campus Ministry of Bemidji is a welcoming grace-filled campus community where everyone is invited to explore faith, deepen relationships and serve our neighbors.

Vision: Lutheran Campus Ministry of Bemidji is a centering place for students to connect with God and each other. Rooted in God's infinite grace, we invite opportunities to be curious about faith, engage in service and grow deeper in relationships. We are committed to welcoming everyone while integrating faith and life to belong and feel both safe and

- CORE VALUES**
- Acceptance**
 - Belonging**
 - Relationship**
 - Connection**
 - Contribution**
 - Faith**

Lutheran Campus Ministry is connected to the Evangelical Lutheran Church in America (ELCA)! We're a part of one of the largest Christian denominations in the United States. The ELCA is a church that has a living, daring confidence in God's grace.

Grace is the hope, forgiveness, joy and new life that is always, always available to us in God. We believe one of the ways grace announces itself in our lives is through faith. For us, faith comes through hearing the good news of God in Jesus:

- **We are loved unconditionally by the Holy One who created us!**
- **God has promised to meet us and be with us in hard times as well as good ones!**
- **We get to see, feel, hear and know God in stories of scripture, in our faith communities and relationships with people around us!**
- **In baptism our liberation & salvation are assured so we have been set free to love and serve our neighbors!**

Your support makes a big difference. Visit us at
1221 Birchmont Dr. NE
on the BSU Campus

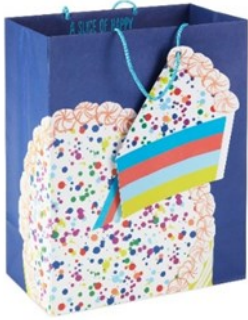
God's Work, Our Treasure—APRIL 2026

This month New Salem is lifting up the work of a mission partner, **Lutheran Campus Ministry Bemidji**, and urges you to consider the various ways you might support this valuable ministry.

You can send your check to New Salem and indicate it is for **LCM-Bemidji**



Spring is here and we're celebrating with extended hours at the food shelf! Please help spread this exciting news as we continue to serve our community with the blessing of food.



And remember, on April 12, we're assembling Birthday Bags! We're collecting (full-size) frosting, cake mix, and birthday napkins in the cart. Our goal is to assemble 150 bags.

Please consider joining our team for a three-hour shift this month. I guarantee you'll feel good and have fun, too!

Friday, Apr. 10, from 9:00 – 12:15

Monday, Apr. 13, from 9:00 – 12:15

Monday, Apr. 13, from 12:00 – 3:15

Let me know if you'd like to join the fun! Not sure? Don't want to commit? Simply stop by and observe. All ages and abilities are welcome. 612.940.7312, ksnortland5@gmail.com.

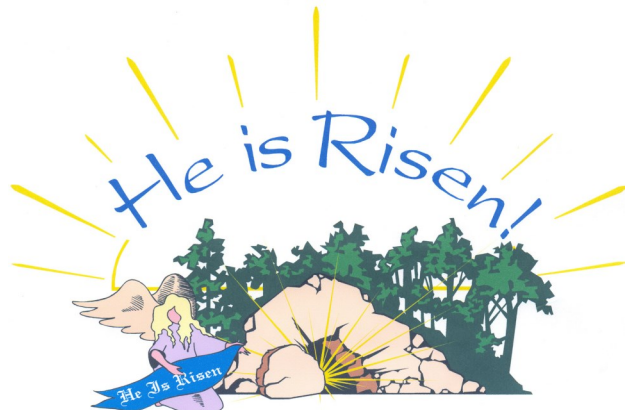
A reminder that donations are accepted in the basket next to the double doors in the narthex. Non-perishable food, egg cartons (one dz. only, please), bags (reusable, too!), Our Family UPCs, books (especially kids), and \$\$ are also welcome.

Psalm 145:15-16: *"The eyes of all wait upon you; and you give them their meat in due season. You open your hand and satisfy the desire of every living thing."*

Thank you for being part of the Light of our community! In His Service,

Karin Snortland

Council of Churches Representative





Rummage & Bake Sale

**All proceeds benefit
community charities**



Saturday, April 18

8 AM – 1 PM

Bargain Sale noon



Drop off rummage items at church.

Dust off your recipes and bake!

Watch for sign-up sheets for helping.

This is an all-congregational event.

New Salem Land Acknowledgement

New Salem Lutheran Church is located on the original and ancestral homelands of the Anishinaabe, Assiniboine, & Dakota people[s], and we give thanks for their presence here since time immemorial. We also wish to recognize and honor all our Indigenous sisters and brothers who have and continue to call this land their home.

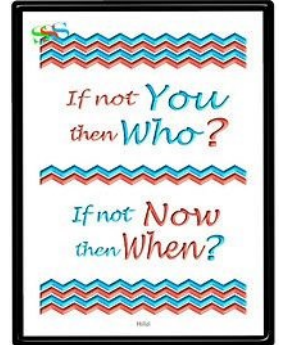


The Service Group Needs a President

The New Salem Service Group is once again in search of a President/leader. This volunteer position is open to all women and men – perhaps there's a couple in the congregation that would like to take on this project?

Note that there is a dedicated Treasure and a dedicated Secretary. Plus others have stepped into leadership roles for the main activities of this Group, such as the Rummage Sale, the Fall Bazaar, the Funeral Coordinator, and stocking the kitchen supplies, so the President has plenty of willing help. Also, the men and women of the congregation are terrific at volunteering to help on the various activities. The Group usually meets every other month on the second Monday.

For more information and a list of responsibilities, please contact interim leader Karyn Lutz at lutz@paulbunyan.net or 218-280-7488.



**YOU are an Important Part of New Salem
Volunteer to assist with some part of worship!
Volunteers Enhance the Worship Experience**

for Everyone!

**Sign-up sheets are on the table in the Narthex.
Instructions are available as needed.**



Do you know that you can support the mission of New Salem electronically?

Yes, collection plates are still passed during service!

You can use your phone to scan this QR code.

It'll take you to a secure Vanco page where you can quickly and easily make your donation. This can be a regularly scheduled or a one time donation.



Or, if you're at your computer, you can simply click on (or copy & paste) this link: <https://secure.myvanco.com/L-Z88A> (ctrl-click) to get to the same Vanco site.



General Fund

Support the general operations of our congregation.

Donate

The General Fund supports the everyday operations of our church. It pays salaries, the mortgage, the utilities, the routine costs of operation as we share the Good Word with our neighbors.

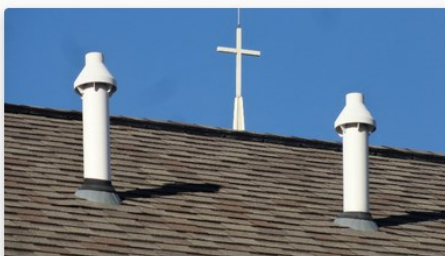


Mission Partners

Donation for Mission Partners. Help causes such as hunger, homelessness, and other needs in our community and society.

Donate

Each month, our Stewardship Team designates a Mission Partner to support with our "second mile" giving. These are organizations that help our neighbors within our community or help ELCA efforts like disaster relief.



Building Fund

Even a house of God sometimes needs repairs!

Donate

The Building Fund supports the repair and maintenance of our church building, which was completed in January of 2005. Just like our own homes, regular upkeep is essential.



New Salem Service Group

Women and men of New Salem united in their efforts to serve the needs of our church and our community.

Donate

This dedicated group sponsors events like an annual rummage sale and an annual craft sale. They also serve at funerals. Funds raised are dispersed back into the community.



to all of you who are currently using Vanco to make donations to the mission of New Salem. Your support is much appreciated.

Life is busy for all of us and giving electronically can help simplify that. Whether you join us in-person or online, **YOU are Welcome** and a part of our New Salem family. Vanco makes it safe and easy to support our mission.